

Hisense HVAC Product Line-up

Hisense VRF

Outdoor Units



AC 3 ϕ , 208/230V/60Hz
Heat Recovery System 8-112HP

- 4 modules combination until 112HP
- 360° fitted refrigerant cooling technology
- Triple backup operation
- Independent maintenance

S Max Series



AC 3 ϕ , 460V/60Hz
Heat Pump System 8-112HP

- 4 modules combination until 112HP
- 360° fitted refrigerant cooling technology
- Triple backup operation
- Independent maintenance

S Series



AC 1 ϕ , 220V/60Hz & AC 3 ϕ , 208/230V/60Hz
Heat Pump System 3-12 HP

- Wide operation range (Cooling -5°C~52°C; Heating -20°C~26°C)
- Special insect protection design
- New refrigerant piping connection with flare-nut branch pipe

H Series

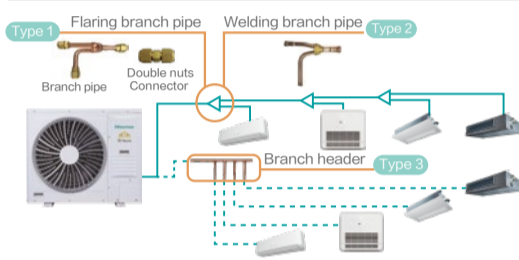


AC 1 ϕ , 220-240V/50Hz, 220V/60Hz
Heat Pump System 3-7HP

- Mini VRF with compactable body and single-pipe design reduces space occupation
- Wide operation range (Cooling 10°C~52°C; Heating -15°C~23°C)
- Multiple piping connection types (Flaring branch, Welding branch, Head branch)
- ODU night quiet mode
- 360° fitted refrigerant cooling technology

Hi-Home Series

Multiple Piping Connection Types



AC 3 ϕ , 208/230V/60Hz
Heat pump & Heat recovery System 8HP-30HP

- 3 modules combination until 30HP
- Various water as source, ecofriendly
- Long piping design
- Flexible installation

W Series

Indoor Units

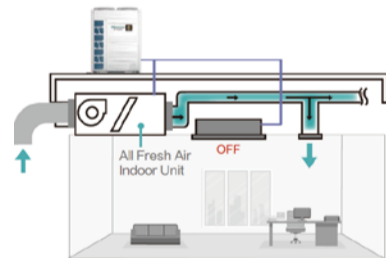
HP	0.6	0.8	1.0	1.3	1.5	1.6	1.8	1.9	2.0	2.3	2.5	3.0	3.3	4.0	5.0	6.0	8.0	10.0
kBtu/h	5	7	9	12	14	15	17	18	19	22	24	27	30	38	48	54	76	96
4-Way Cassette			•	•					•	•	•	•	•	•	•	•		
Mini 4-Way Cassette	•	•	•	•		•	•		•									
Ceiling Ducted (DC Low-height)			•	•	•		•	•		•	•	•						
Ceiling Ducted (High Static Pressure)			•	•	•		•	•		•	•	•	•	•	•	•	•	•
Ceiling Ducted (DC High Static Pressure)			•	•	•		•	•		•	•	•	•	•	•	•	•	•
1-Way Cassette																		•
2-Way Cassette			•	•	•		•	•		•								•
Console			•	•	•		•	•		•								•
Wall Mounted			•	•	•		•	•		•								•
Ceiling & Floor																		•
Floor Concealed																		•

Fresh Air Solutions

All Fresh Air Indoor Unit



388-1235 CFM



Heat Recovery Ventilator



88-2941 CFM

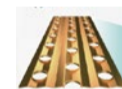
Hisense Anticorrosive Solution

Various Types of Fin



Black Fin

Applications: High temperature, humidity, solar, ultraviolet and salt contamination, such as seaside etc.



Copper Fin

Applications: High temperature, humidity, solar, ultraviolet, acidic, alkaline and other corrosive gas, such as chemical factory, etc.

Special Treatments for Components



Hisense Anti-corrosion Surface Treatment Step:

- 1st Step: Zirconium-based Treatment
- 2nd Step: Spray Coating of Epoxy Zinc Rich Primer
- 3rd Step: Spray Coating of Pure Polyester Paint

Control

Controllers



HYXE-J01H
Wired Controller LED
120mm x 120mm



HYXE-VA01A
Wired Controller
120mm x 120mm



HYXM-VB01A
Wired Controller Touch Screen
86mm x 90mm



HYXE-VC01
Wired Controller
86mm x 86mm



HYXE-S01H
Wired Controller
120mm x 70mm



HYE-VD01
Wireless Controller
145mm x 55mm



HYJM-RA10D
Centralized Controller
170mm x 252mm



HYJ-J01H
ON/OFF Controller
120mm x 120mm

Intelligent Control System



Hi-Mit II
Smartphone Intelligent Control System



Hi-DOM III
PC Intelligent Control System



Hi-Cloud Manager
Unified Access Management of Hisense HVAC Intelligent Control

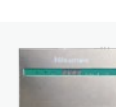


Hi-Checker
Intelligent Service Tool

BMS



BMS-BACnet



BMS-Modbus



KNX

Hisense HVAC Product Line-up

Control

Third Party Compatible Controllers



Airzone
Residential, Hotel



Honeywell Inncom
Hotel



Lutron
Residential, Office, Hotel



Nest
Residential



CoolMaster
Residential, Office

Optional Parts



Humidity Sensor



Air Pure



Switch Box



3d Air-flow Panel



Motion Sensor



Water Module



AHU Kit

Hisense CHILLERS

Mini Chillers



AC 1 ϕ , 220V/60Hz, R32 refrigerant

4/8KW

- Operation range: Cooling: 5°C~46°C; Heating: -25°C~35°C
- Outlet water temp.: Cooling: 5°C~22°C; Heating: 15°C~60°C
- 10~16KW
- Operation range: Cooling: 5°C~46°C; Heating: -25°C~35°C
- Outlet water temp.: Cooling: 5°C~22°C; Heating: 20°C~65°C

Air-cooled Modular Chiller



63kW, 130kW AC 3 ϕ , 208~230V/60Hz
100kW AC 3 ϕ , 460V/60Hz

- Operation range: Cooling: -5°C~48°C; Heating: -15°C~25°C
- Outlet water temp.: Cooling: 5°C~15°C; Heating: 35°C~50°C

Air-cooled Screw Chiller



100~420Ton AC 3 ϕ , 460V/60Hz

- High-efficiency screw compressor with stable operation
- High-efficiency air-side/water-side heat exchanger

Water-cooled Screw Chiller



100~470Ton AC 3 ϕ , 460V/60Hz

- Well-proven twin-screw compression technology
- New high-efficiency flooded evaporator
- Differential pressure water flow switch for easier operation

Inverter Magnetic Centrifugal Chiller



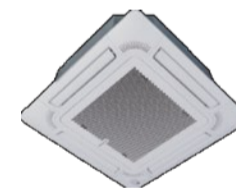
125~800Ton AC 3 ϕ , 460V/60Hz

- High-efficiency magnetic bearing centrifugal compressor
- Modular design benefits for the renovation solution

FCU



DC HORIZONTAL CONCEALED
4-PIPE OPTIONAL



DC CASSETTE FAN
COIL UNIT

AHU



CEILING SUSPENDED AHU

- 2000~15000 m³/h
- Fresh air /return air
- Standard: nylon filter
- Optional: G3/G4 filter
- AC 3 ϕ , 220V/60Hz, 460V/60Hz



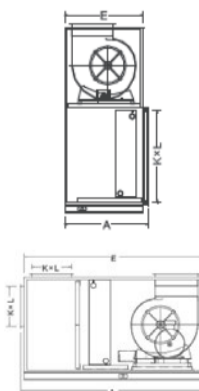
MAHU

- 2000~100000 m³/h
- AC 3 ϕ , 220V/60Hz, 460V/60Hz

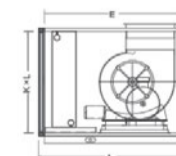


HORIZONTAL /VERTICAL TYPE AHU

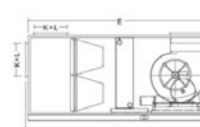
- 2000~50000 m³/h
- AC 3 ϕ , 220V/60Hz, 460V/60Hz



- External Slide Nylon Filter (Standard) / Plate Primary Filter (Optional)+Coil+Wet-Film Humidifier (Optional)+Fan



- External Slide Plate Primary Filter (Optional)+Coil+Wet-Film Humidifier (Optional)+Fan



- Mixing Section+Plate Primary Filter+Coil+Wet-Film Humidifier (Optional)+Fan

- Mixing Section+Plate Primary Filter+Medium Efficiency Filter+Coil+Fan